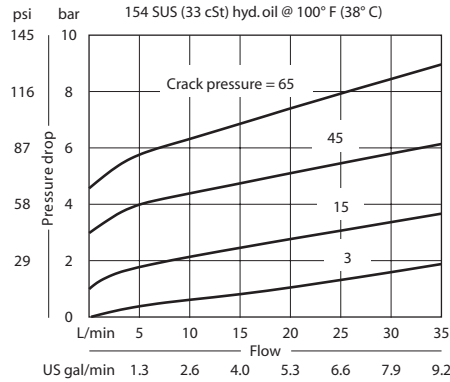


**OPERATION**

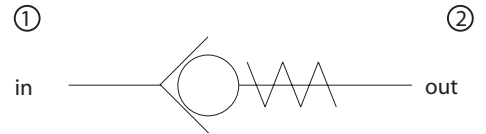
This valve allows free flow from 1 to 2 and blocks flow from 2 to 1.

**SPECIFICATIONS**

Theoretical performance



Schematic



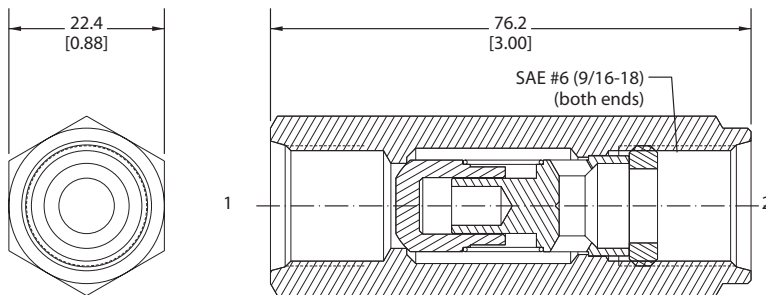
Specifications

Rated pressure	350 bar 5075 psi
Rated flow at 7 bar	35 l/min
100 psi	9 US gal/min
Leakage	5 drops/min @ Rated pressure
Weight	0.17 kg 0.37 lb
Cavity	none

**DIMENSIONS**

mm in

Cross-sectional view



**ORDERING INFORMATION**

