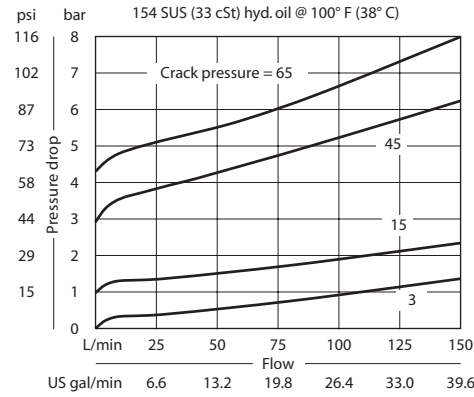


OPERATION

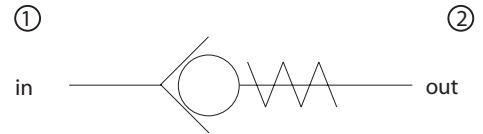
This valve allows free flow from 1 to 2 and blocks flow from 2 to 1.

SPECIFICATIONS

Theoretical performance



Schematic



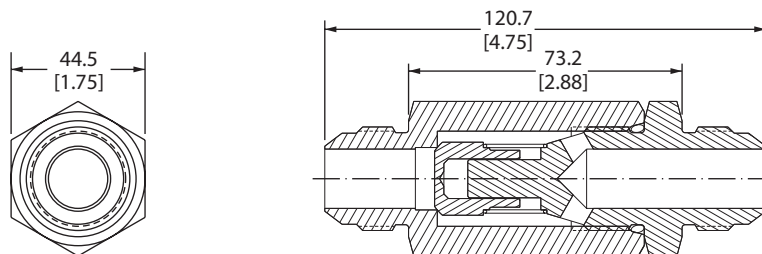
Specifications

Rated pressure	350 bar 5075 psi
Rated flow at 7 bar	150 l/min
100 psi	40 US gal/min
Leakage	5 drops/min @ Rated pressure
Weight	0.85 kg 1.87 lb
Cavity	none

DIMENSIONS

mm in

Cross-sectional view



ORDERING INFORMATION

3CM15-01-B-16F-16F-03

