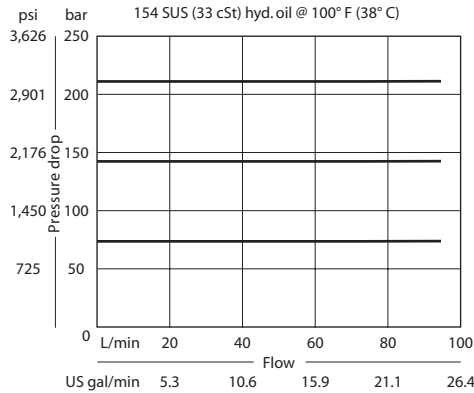


OPERATION

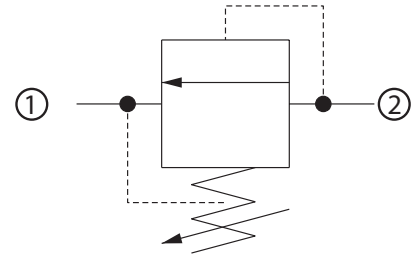
This is a direct acting differential area poppet type relief valve that relieves from 2 to 1.

SPECIFICATIONS

Theoretical performance



Schematic



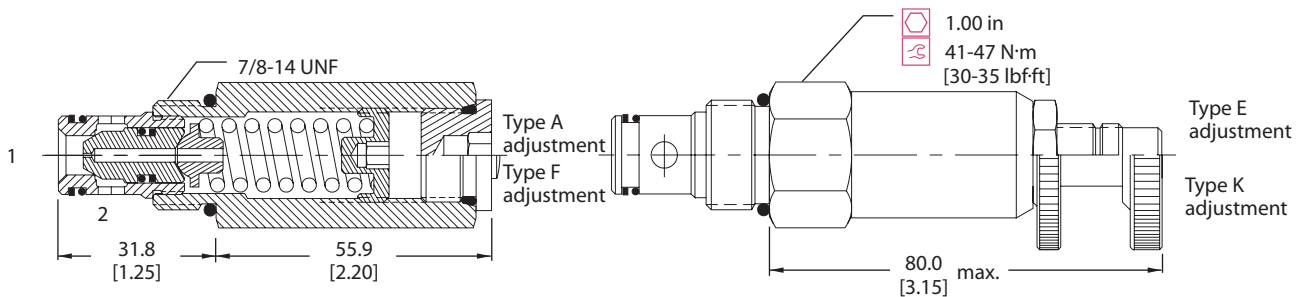
Specifications

Rated pressure	250 bar [3600 psi]
Rated flow	75 l/min [20 US gal/min]
Leakage	10 drops/min @ 80% of pressure setting
Weight	0.21 kg [0.46 lb]
Cavity	SDC10-2

DIMENSIONS

mm [in]

Cross-sectional view



ORDERING INFORMATION

CP200 - 1 - B - 8S - A - C - 150

Seals
 B = Buna-N
 V = Viton

Housing and ports
 0 = No Housing
 DG3B = Al, 3/8 BSP
 DG4B = Al, 1/2 BSP
 6S = Al, #6 SAE
 8S = Al, #8 SAE
 Other housings available

Seal kit
 120015
 120016

Housing P/N
 No Housing
 SDC10-2-DG-3B
 SDC10-2-DG-4B
 SDC10-2-6S
 SDC10-2-8S

Crack pressure
 Code x 10 = psi
 Example: 150 = 1500 psi

Pressure range

Code	bar	[psi]
A = Standard	7-55	[100-800]
B = Standard	28	[400]
C = Standard	17-138	[250-2000]
	69	[1000]
	41-248	[600-3600]
Standard	103	[1500]

Adjustment option
 A = Internal
 E = External
 F = Tamper resistant
 K = Knob