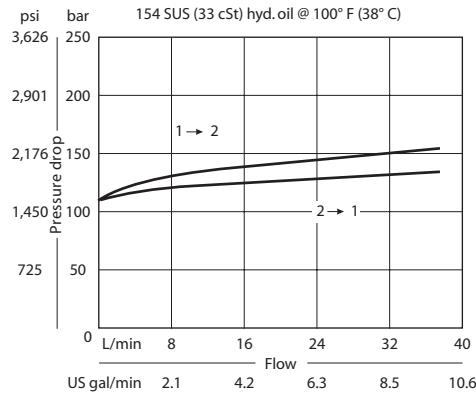


OPERATION

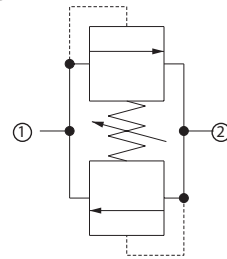
This is a bi-directional relief valve that relieves pressure from 1 to 2 and from 2 to 1.

SPECIFICATIONS

Theoretical performance



Schematic

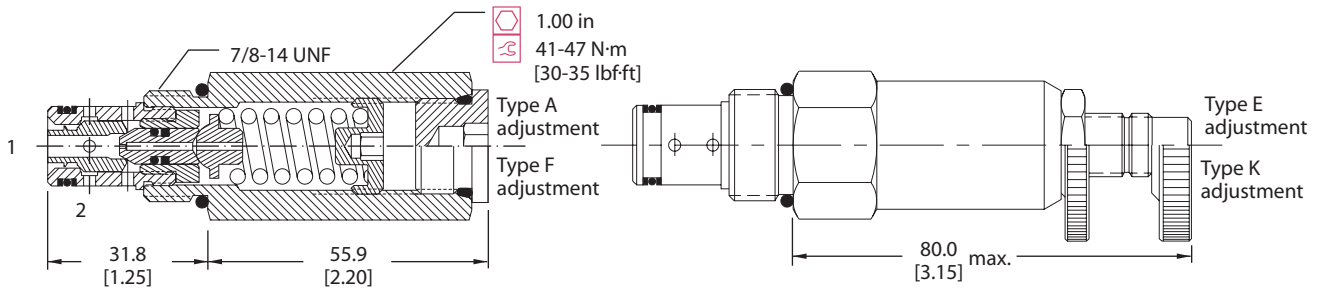


Specifications

| | |
|-----------------------|---|
| Rated pressure | 250 bar [3600 psi] |
| Rated flow | 40 l/min [11 US gal/min] |
| Leakage | 5 cm ³ /min [0.3 in ³ /min] @ 80% of pressure setting |
| Weight | 0.20 kg [0.43 lb] |
| Cavity | SDC10-2 |

DIMENSIONS

Cross-sectional view



ORDERING INFORMATION

CP200 - 7 - B - 8S - A - C - 150

| | | | | | |
|--------------------------|--|--------------------|--|-------------------------|------------|
| Seals | | Seal kit | | Crack pressure | |
| B = Buna-N | | 120073 | | Code x 10 = psi | |
| V = Viton | | 120074 | | Example: 150 = 1500 psi | |
| Housing and ports | | Housing P/N | | Pressure range | |
| 0 = No Housing | | No Housing | | A = 7-41 | bar [psi] |
| DG3B = Al, 3/8 BSP | | SDC10-2-DG-3B | | Standard 28 | [100-600] |
| DG4B = Al, 1/2 BSP | | SDC10-2-DG-4B | | B = 17-138 | [250-2000] |
| 6S = Al, #6 SAE | | CP10-2-6S | | Standard 69 | [1000] |
| 8S = Al, #8 SAE | | CP10-2-8S | | C = 41-248 | [600-3600] |
| Other housings available | | | | Standard 103 | [1500] |
| Adjustment option | | | | | |
| A = Internal | | | | | |
| E = External | | | | | |
| F = Tamper resistant | | | | | |
| K = Knob | | | | | |