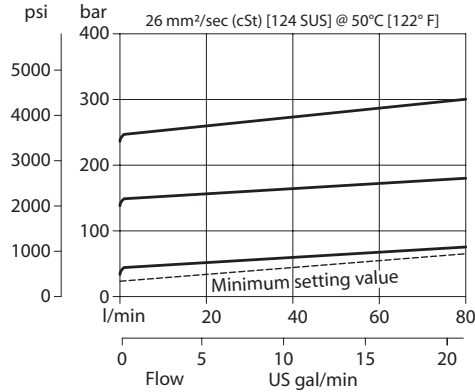


**OPERATION**

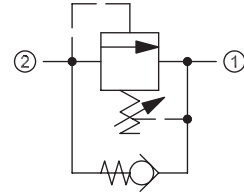
This is a direct-acting, differential area, poppet-type relief valve that relieves from 2 to 1 with an integral free-flow check from 1 to 2.

**SPECIFICATIONS**

Theoretical performance



Schematic



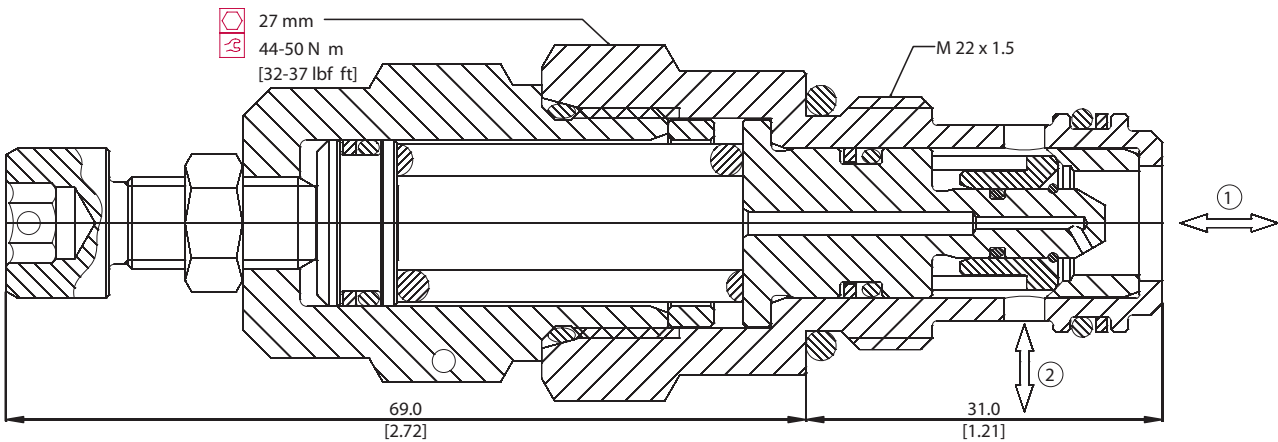
Specifications

<b>Rated pressure</b>	350 bar [5075 psi]
<b>Rated flow</b>	80 l/min [21 US gal/min]
<b>Weight</b>	0.22 kg [0.49 lb]
<b>Cavity</b>	NCS06/2

**DIMENSIONS**

mm [in]

Cross-sectional view



**ORDERING INFORMATION**

**VSB 06-EN - 1 - 00 - V - XXX**

**Setting range**

- 1 = 20 - 80 bar [363 - 2031 psi]
- 2 = 70 - 210 bar [1015 - 3046 psi]
- 3 = 105 - 350 bar [1523 - 5076 psi]

- Seals**  
 V = Viton  
 Omit = Buna-N

- Housing and ports**  
 00 = No Housing  
 DG3/8 = AL, 3/8 BSP  
 DG1/2 = AL, 1/2 BSP  
 DG6S = AL, #6 SAE  
 DG8S = AL, #8 SAE  
 Other housings available

- Seal Kit**  
 230000380  
 230000060

- Housing P/N**  
 No Housing  
 NCS06/2-DG-3/8  
 NCS06/2-DG-1/2  
 NCS06/2-DG-6S  
 NCS06/2-DG-8S

To order this valve with a specific factory setting, contact your Comatrol representative