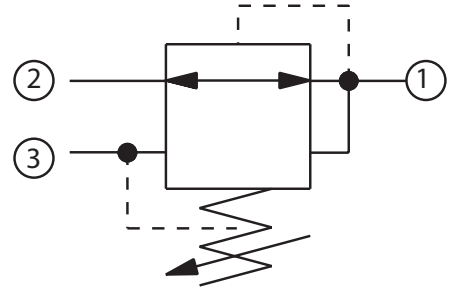


**OPERATION**

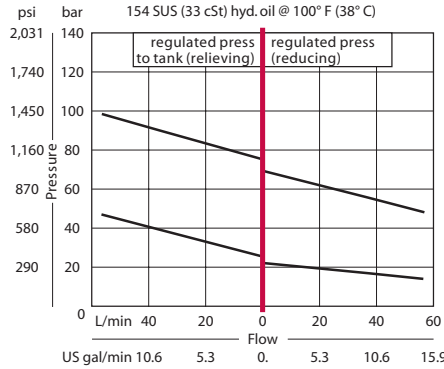
This is a direct-acting pressure reducing/relieving valve.

Schematic



**SPECIFICATIONS**

Theoretical performance



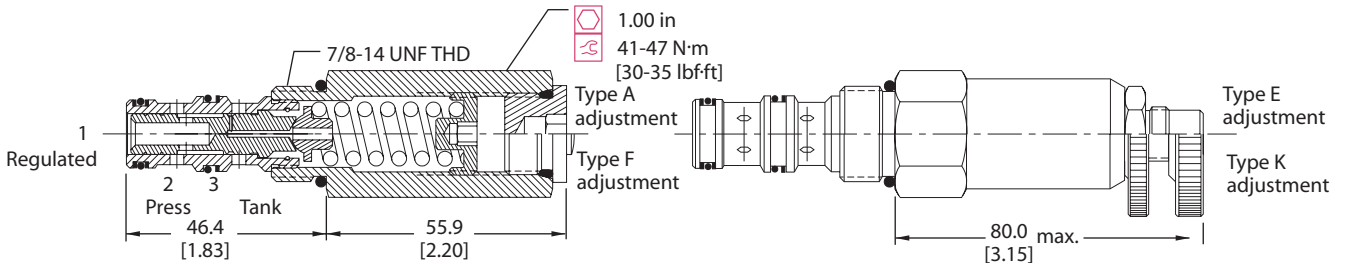
Specifications

<b>Rated pressure</b>	210 bar [3000 psi]
<b>Rated flow at 7 bar [100 psi]</b>	40 l/min [10 US gal/min]
<b>Weight</b>	0.23 kg [0.51 lb]
<b>Cavity</b>	SDC10-3

**DIMENSIONS**

mm [in]

Cross-sectional view



**ORDERING INFORMATION**

CP230 - 1 - B - 6S - A - C - 100

**Seals**  
 B = Buna-N  
 V = Viton

**Seal kit**  
 120570  
 120571

**Housing and ports**  
 0 = No Housing  
 SE3B = Al, 3/8 BSP  
 SE4B = Al, 1/2 BSP  
 6S = Al, #6 SAE  
 8S = Al, #8 SAE  
 Other housings available

**Housing P/N**  
 No Housing  
 SDC10-3-SE-3B  
 SDC10-3-SE-4B  
 CP10-3-6S  
 CP10-3-8S

**Pressure setting**  
 Code x 10psi (0.69 bar)  
 Example: 100 = 1000 psi (70 bar)

**Pressure range**

	bar	[psi]
A =	4-28	[50-400]
Std. setting	17	[250]
B =	5-55	[75-800]
Std. setting	28	[400]
C =	7-97	[100-1400]
Std. setting	69	[1000]
D =	34-166	[500-2400]
Std. setting	103	[1500]

**Adjustment option**  
 A = Internal  
 E = External  
 F = Tamper resistant  
 K = Knob

PR - Pressure Reducing Valves  
 CP230-1