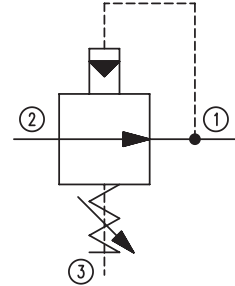


OPERATION

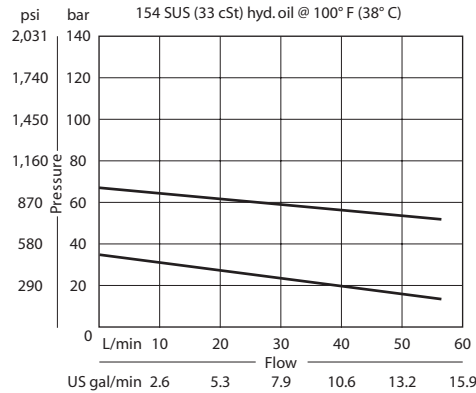
This is a pilot-operated pressure-reducing (non-relieving) valve.

Schematic



SPECIFICATIONS

Theoretical performance



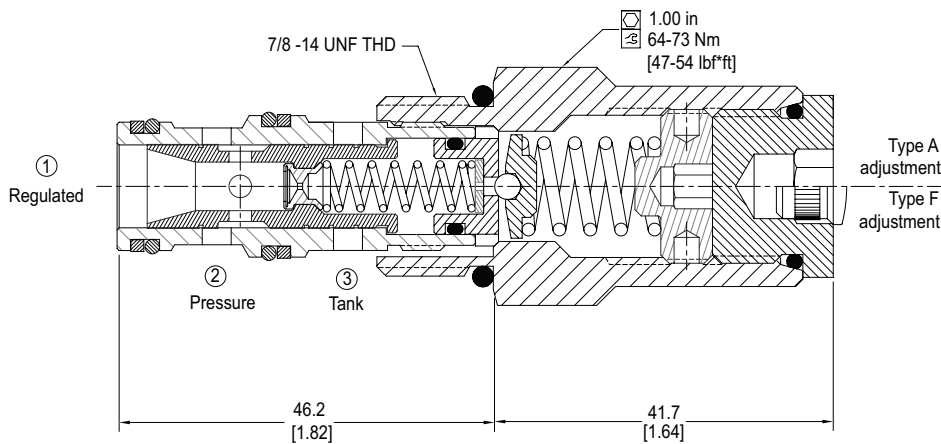
Specifications

Rated pressure	350 bar [5000 psi]
Rated flow at 7 bar [100 psi]	40 l/min [10 US gal/min]
Weight	0.20 kg [0.43 lb]
Cavity	SDC10-3

DIMENSIONS

mm [in]

Cross-sectional view



ORDERING INFORMATION

CP230 - 4 - B - 6S - A - C - 150

Seals B = Buna-N V = Viton	Seal kit 120027 120028	Housing P/N No Housing SDC10-3-SE-3B SDC10-3-SE-4B CP10-3-6S CP10-3-8S	Pressure setting Code x 10psi (0.69 bar) Example: 150 = 1500 psi (105 bar)
Housing and ports 0 = No Housing SE3B = Al, 3/8 BSP SE4B = Al, 1/2 BSP 6S = Al, #6 SAE 8S = Al, #8 SAE Other housings available	Adjustment option A = Internal E = External F = Tamper resistant K = Knob	Pressure range	
		bar	[psi]
		A = 14-55	[200-800]
		Standard 28	[400]
		B = 21-103	[300-1500]
		Standard 69	[1000]
		C = 28-207	[400-3000]
		Standard 103	[1500]
		D = 28-345	[400-5000]
		Standard 103	[1500]

PR - Pressure Reducing Valves CP230-4