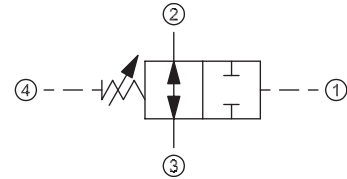


OPERATION

Valve allows flow between 2 and 3 until sufficient pressure is applied at 1 to close the valve. Note that pressure at 4 is additive to the spring setting.

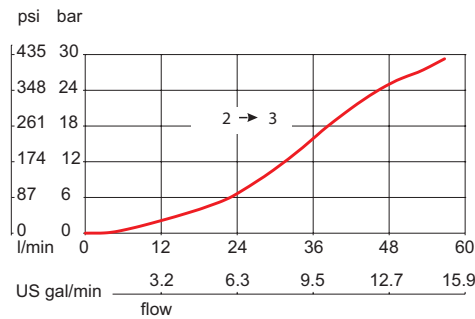
Schematic



SPECIFICATIONS

Theoretical performance

33 cSt [154 SUS] hyd.oil @ 38°C [100° F]



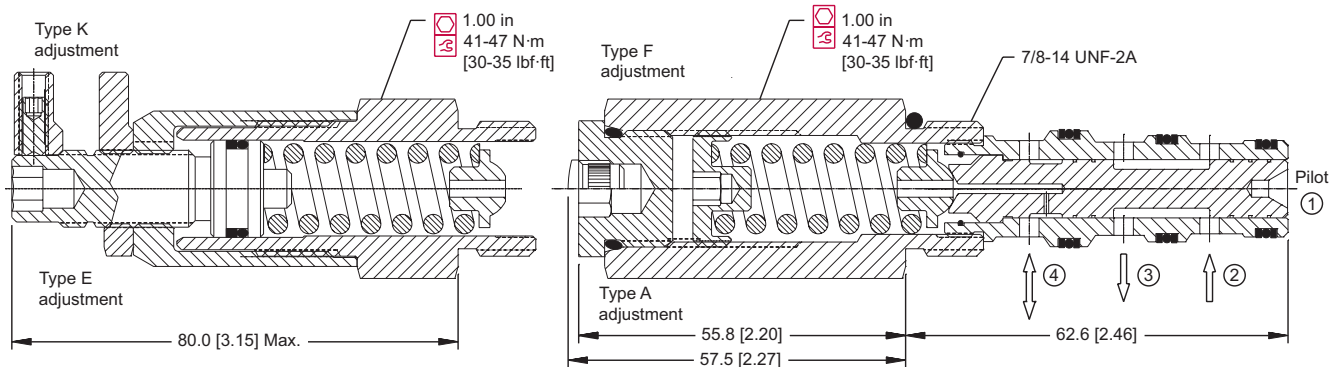
Specifications

Rated pressure	210 bar [3000 psi]
Rated flow at 7 bar [100 psi]	25 l/min [7 US gal/min]
Weight	0.26 kg [0.57 lb]
Cavity	SDC10-4

DIMENSIONS

mm [in]

Cross-sectional view



ORDERING INFORMATION

CP240-5-V-L3B-A-B-050

Seals	Seal kit	Sequence Pressure
B = Buna-N	120023	Code x 0.69 = bar
V = Viton	120024	[Code x 10 = psi]
		Example: 050 = 34.5 bar [500 psi]
Housing and ports	Housing P/N	Pressure range
0 = No Housing	No Housing	bar [psi]
L3B = AL, 3/8 BSP	SDC10-4-L-3B	A = 3.4 - 27.6 [50 - 400]
L4B = AL, 1/2 BSP	SDC10-4-L-4B	B = 4.8 - 55.2 [70 - 800]
6S = AL, #6 SAE	SDC10-4-6S	C = 6.9 - 96.5 [100 - 1400]
8S = AL, #8 SAE	SDC10-4-8S	D = 34.5 - 165.5 [500 - 2400]
Other housings available		Adjustment option
		A = Internal
		E = External
		F = Tamper resistant
		K = Knob

SQ - Sequence Valves CP240-5