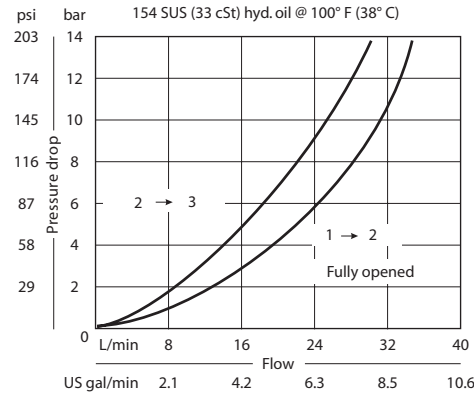


OPERATION

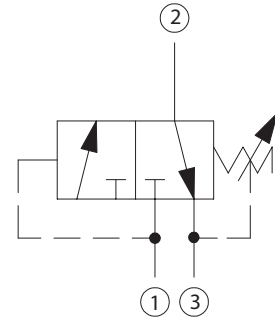
This valve is a direct acting, spool type sequence valve with internal pilot. This valve allows flow from 2 to 3 and blocks 1. At reaching the sequence pressure 1 is opened to 2.

SPECIFICATIONS

Theoretical performance



Schematic



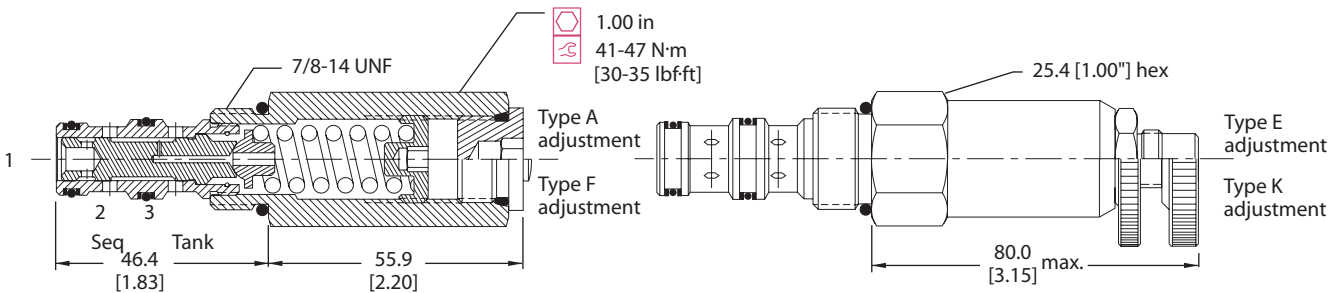
Specifications

Rated pressure	210 bar [3000 psi]
Rated flow at 7 bar [100 psi]	25 l/min [7 US gal/min]
Weight	0.25 kg [0.56 lb]
Cavity	SDC10-3

DIMENSIONS

mm [in]

Cross-sectional view



ORDERING INFORMATION

CP240 - 1 - B - 6S - A - C - 100

Seals	B = Buna-N V = Viton	Seal kit	120009 120010	Crack pressure	Code x 10 = psi Example: 100 = 1000 psi
Housing and ports	0 = No Housing SE3B = Al, 3/8 BSP SE4B = Al, 1/2 BSP 6S = Al, #6 SAE 8S = Al, #8 SAE Other housings available	Housing P/N	No Housing SDC10-3-SE-3B SDC10-3-SE-4B CP10-3-6S CP10-3-8S	Pressure range	bar [psi] A = 4-28 [50-400] Std. setting 17 [250] B = 5-55 [75-800] Std. setting 28 [400] C = 7-97 [100-1400] Std. setting 69 [1000] D = 34-166 [500-2400] Std. setting 103 [1500]
Adjustment option	A = Internal E = External F = Tamper resistant K = Knob				