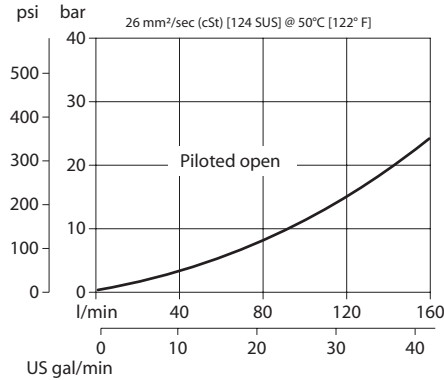


**OPERATION**

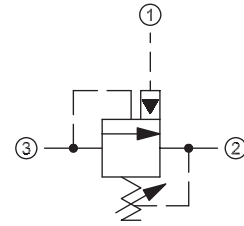
This is a pilot-operated unloading valve.

**SPECIFICATIONS**

**Theoretical performance**



**Schematic**

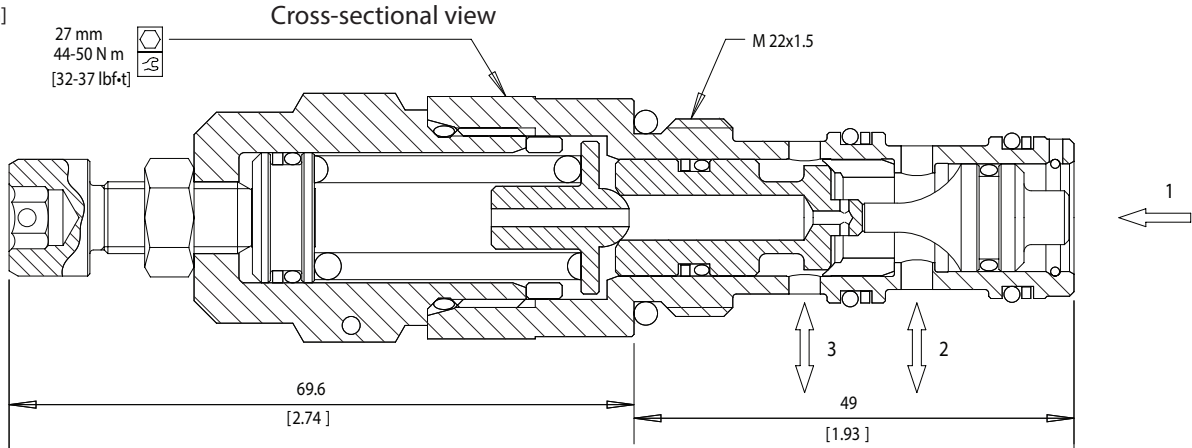


**Specifications**

Rated pressure	350 bar [5075 psi]
Rated flow	160 l/min [42 US gal/min]
Weight	0.70 kg [1.54 lb]
Cavity	NCS12/3

**DIMENSIONS**

mm [in]



**ORDERING INFORMATION**

**VDB 12-EN - 2 - A - 00 - V**

**Setting range**

<b>Pilot ratio A</b>	<b>Pilot ratio B</b>
1 = 25 - 170 bar [363-2466 psi]	1 = 25 - 120 bar [363-1740 psi]
2 = 70 - 250 bar [1015-3626 psi]	2 = 60 - 200 bar [870-2900 psi]
3 = 105 - 350 bar [1523-5076 psi]	3 = 90 - 280 bar [1305-4061 psi]

**Pilot ratio**

A = 6.9 : 1  
 B = 4.7 : 1

**Seals**  
 V = Viton  
 Omit = Buna-N

**Housing and ports**  
 00 = No Housing  
 SE1/2 = AL, 1/2 BSP  
 SE3/4 = AL, 3/4 BSP  
 SE85 = AL, #8 SAE  
 SE125 = AL, #12 SAE  
 Other housings available

**Seal kit**  
 230000360  
 230000130

**Housing P/N**  
 No Housing  
 NCS12/3-SE-1/2  
 NCS12/3-SE-3/4  
 NCS12/3-SE-85  
 NCS12/3-SE-125

To order this valve with a specific factory setting, contact your Comatrol representative

SQ - Sequence Valves  
 VDB 12-EN