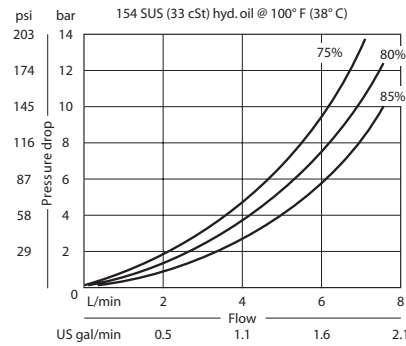


OPERATION

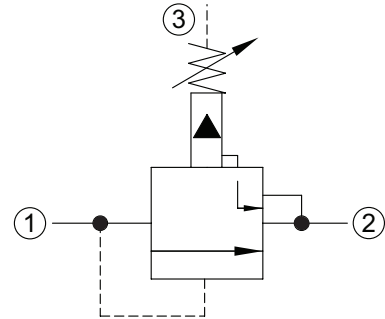
This is a normally-closed sequence valve that loads and unloads a system at a pre-determined ratio.

SPECIFICATIONS

Theoretical performance



Schematic



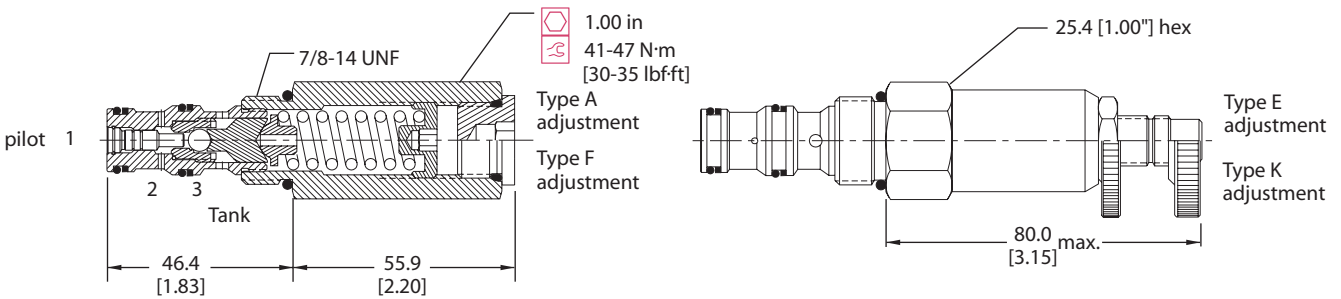
Specifications

| | |
|----------------|---------------------------|
| Rated pressure | 240 bar [3500 psi] |
| Maximum flow | 4 l/min [1 US gal/min] |
| Weight | 0.24 kg [0.53 lb] |
| Cavity | SDC10-3 |

DIMENSIONS

mm [in]

Cross-sectional view



ORDERING INFORMATION

CP240 - 30 - B - 6S - A - B - 75 - 150

- Seals: B = Buna-N, V = Viton
- Seal kit: 120027, 120028
- Housing and ports: 0 = No Housing, SE3B = Al, 3/8 BSP, SE4B = Al, 1/2 BSP, 6S = Al, #6 SAE, 8S = Al, #8 SAE. Other housings available.
- Housing P/N: No Housing, SDC10-3-SE-3B, SDC10-3-SE-4B, CP10-3-6S, CP10-3-8S
- Adjustment option: A = Internal, E = External, F = Tamper resistant, K = Knob
- Crack pressure: Code x 10 = psi. Example: 150 = 1500 psi
- Pressure ratio: 75 = 75%, 80 = 80%, 85 = 85%
- Pressure range: A = 28-103 bar [400-1500 psi], Std. setting 69 [1000]; B = 62-240 bar [900-3500 psi], Std. setting 103 [1500]

P102 182E

SQ - Sequence Valves
 CP240-30