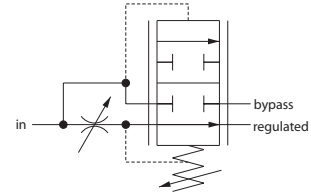


**OPERATION**

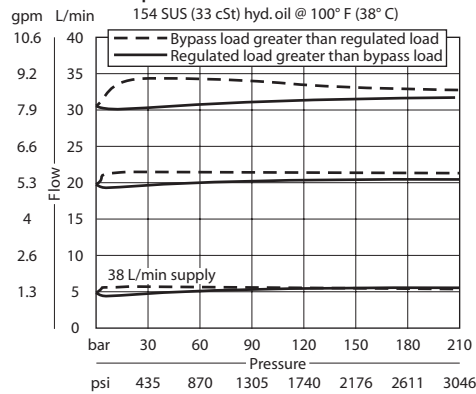
This valve is an adjustable, priority-type, pressure compensated flow control valve.

Schematic



**SPECIFICATIONS**

**Theoretical performance**



P102 682

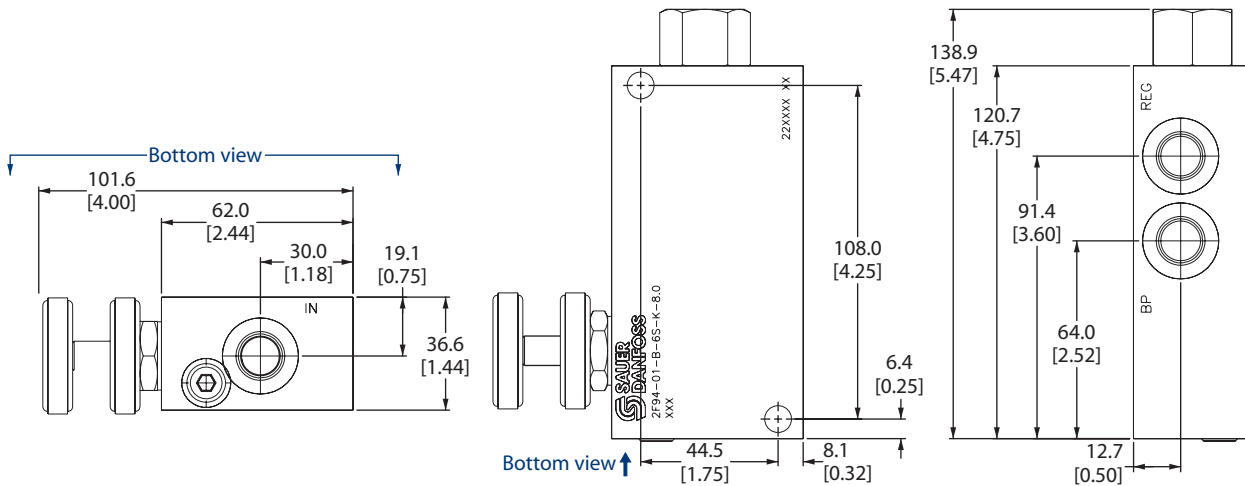
**Specifications**

Rated pressure	210 bar 3000 psi
Max regulated flow	30 l/min 8 US gal/min
Max inlet flow	60 l/min 16 US gal/min
Weight	1.00 kg 2.20 lb
Cavity	none

**DIMENSIONS**

mm in

**Cross-sectional view**



**ORDERING INFORMATION**

2F94-01-B-6S-E-8.0

- Adjustment options**  
 E = External adjustment  
 K = Knob adjustment
- Body and ports**  
 6S = Aluminum, #6 SAE
- Seals**  
 B = Buna-N  
 V = Viton
- Adjustment range**  
 Code = 0-8 gpm
- Seal kits**  
 Consult Factory