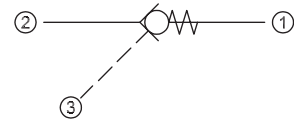


**OPERATION**

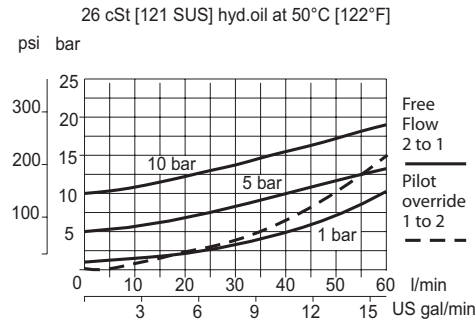
This is a pilot-to-open check valve.

**Schematic**



**SPECIFICATIONS**

**Theoretical performance**



**Specifications**

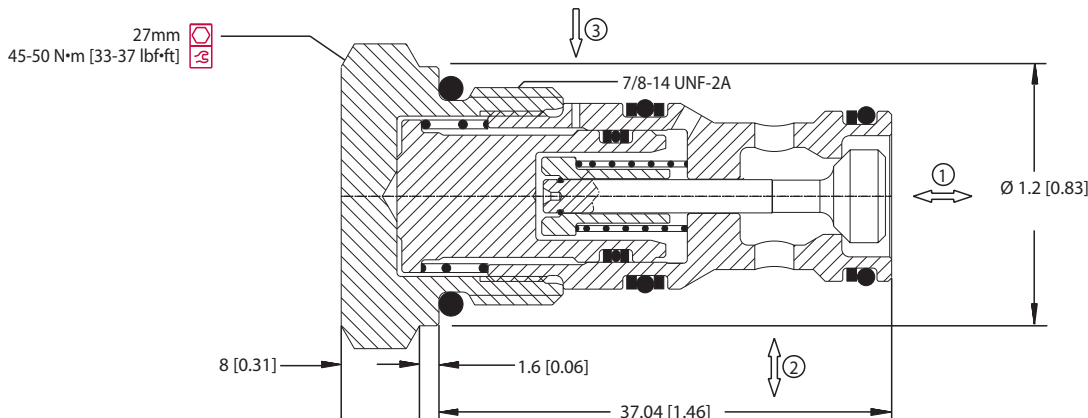
<b>Rated pressure</b>	250 bar [3600 psi]
<b>Rated flow at 7 bar [100 psi]</b>	45 l/min [12 US gal/min]
<b>Leakage</b>	6 drops/min @ Rated pressure
<b>Weight</b>	0.12 kg [0.26 lb]
<b>Pilot ratio</b>	3.0:1
<b>Cavity</b>	SDC10-3S

Note: A piston seal requires a 4.5 bar [65 psi] or greater return spring.

**DIMENSIONS**

mm [in]

Cross-sectional view



P1037

**ORDERING INFORMATION**

**MC10-RO-5-OR-A-B-6S**

<b>Crack Pressure</b>		<b>Housing and ports</b>	<b>Housing P/N</b>
1 = 1 bar [15 psi]		00 = No Housing	No Housing
5 = 5 bar [73 psi]		SE3B = Al, 3/8 BSP	SDC10-3S-SE-3B
10 = 10 bar [145 psi]		SE4B = Al, 1/2 BSP	SDC10-3S-SE-4B
		6S = Al, #6 SAE	SDC10-3S-6S/6S
		8S = Al, #8 SAE	SDC10-3S-8S/6S
<b>Piston seals</b>		Other housings available	
Omit = No seal		<b>Seals</b>	<b>Seal kit</b>
OR = Seals included		B = Buna-N	35401419
		V = Viton	35401519