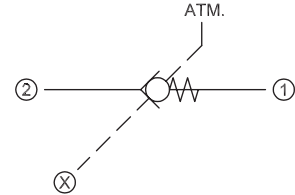


OPERATION

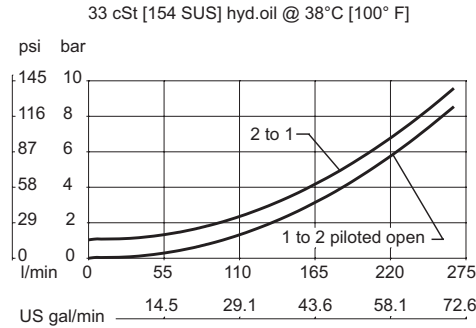
This is a pilot-to-open check valve with an external pilot connection.

Schematic



SPECIFICATIONS

Theoretical performance



Specifications

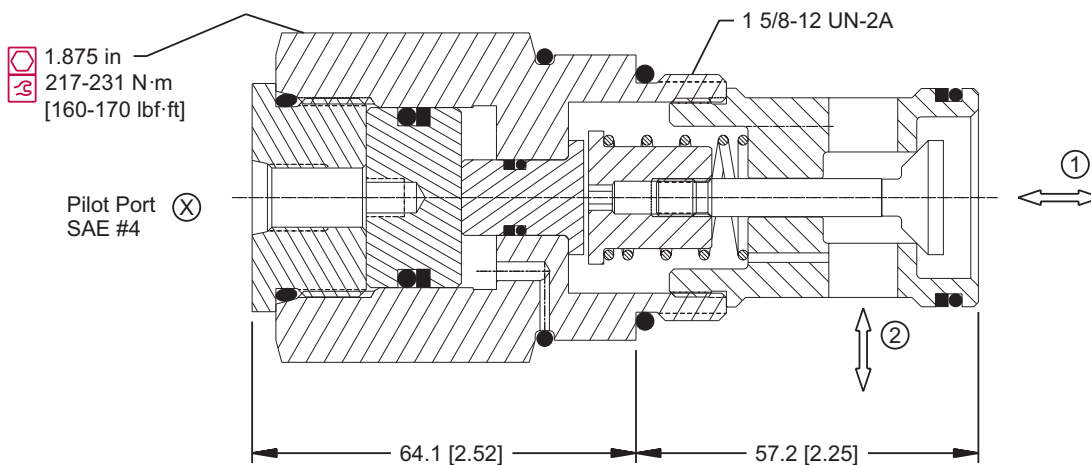
Rated pressure	350 bar [5075 psi]
Rated flow at 7 bar [100 psi]	250 l/min [66 US gal/min]
Leakage	6 drops/min @ Rated pressure
Weight	1.23 kg [2.71 lb]
Pilot ratio	4:1
Cavity	SDC20-2

Note: A piston seal requires a 4.5 bar [65 psi] or greater return spring.

DIMENSIONS

mm [in]

Cross-sectional view



ORDERING INFORMATION

CP453-5-B-16S-4-065

Seals	Seal kit	<p>Crack Pressure</p> <table border="0"> <tr> <td></td> <td>bar</td> <td>[psi]</td> </tr> <tr> <td>065 =</td> <td>4.3</td> <td>65</td> </tr> <tr> <td>100 =</td> <td>6.9</td> <td>100</td> </tr> </table>		bar	[psi]	065 =	4.3	65	100 =	6.9	100
	bar		[psi]								
065 =	4.3	65									
100 =	6.9	100									
B = Buna-N V = Viton	120011 120012										
Housing and ports	Housing P/N	<p>Pilot ratio 4 = 4:1</p>									
0 = No Housing 8B = AL, 1 BSP 10B = AL, 1-1/4 BSP 16S = AL, #16 SAE 20S = AL, #20 SAE Other housings available	No Housing CP20-2-8B CP20-2-10B CP20-2-16S CP20-2-20S										

PO - Pilot Operated Check Valves
CP453-5