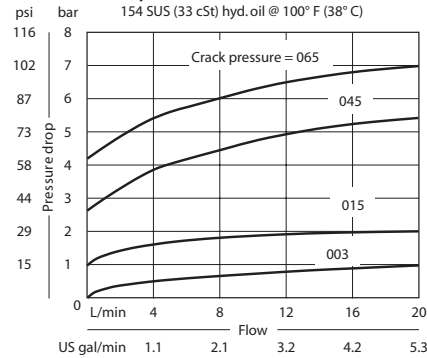


OPERATION

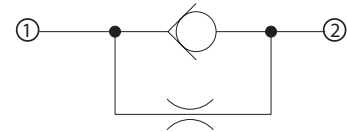
This valve allows free flow from 1 to 2 and restricted flow from 2 to 1.

SPECIFICATIONS

Theoretical performance



Schematic



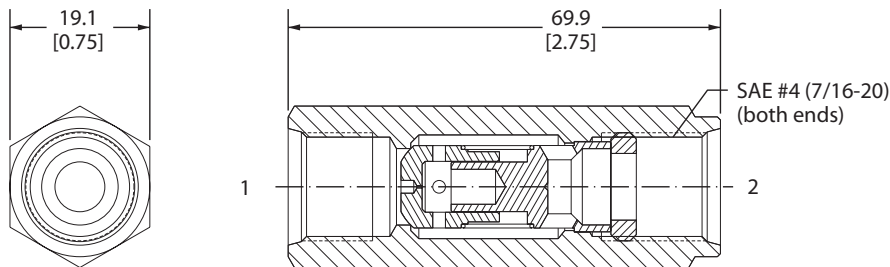
Specifications

Rated pressure	350 bar 5075 psi
Rated flow at 7 bar	20 l/min
100 psi	5 US gal/min
Weight	0.11 kg 0.24 lb
Cavity	none

DIMENSIONS

mm in

Cross-sectional view



ORDERING INFORMATION

2RN11-01-4S-003-021

