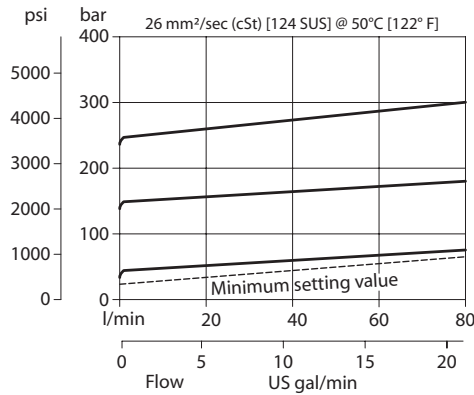


**OPERATION**

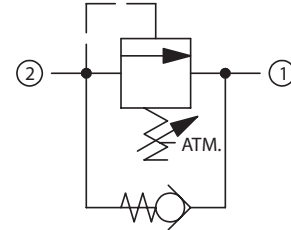
This is a direct-acting, differential area, atmospherically-vented, poppet-type relief valve that relieves from 2 to 1 with an integral free-flow check from 1 to 2.

**SPECIFICATIONS**

Theoretical performance



Schematic



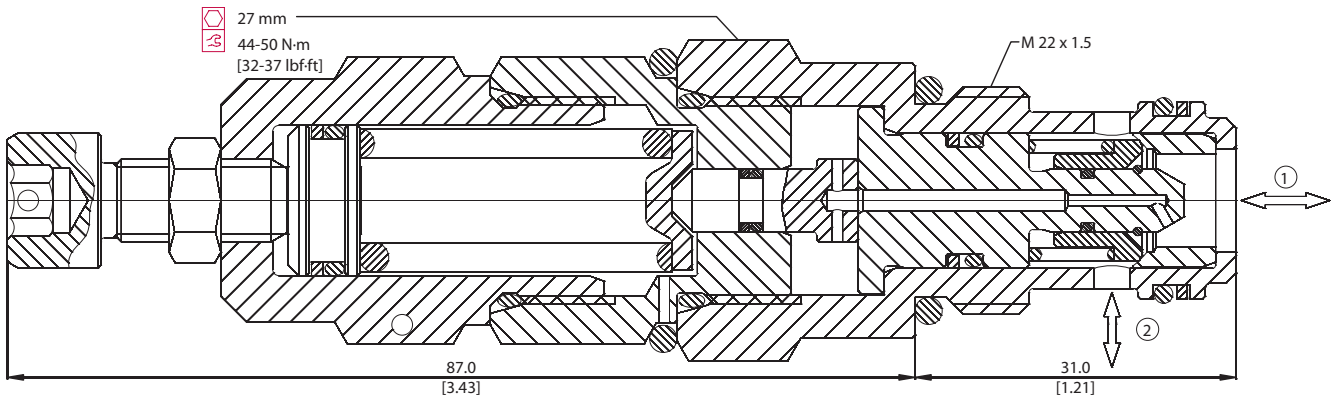
Specifications

|                       |                          |
|-----------------------|--------------------------|
| <b>Rated pressure</b> | 350 bar [5075 psi]       |
| <b>Rated flow</b>     | 80 l/min [21 US gal/min] |
| <b>Weight</b>         | 0.29 kg [0.64 lb]        |
| <b>Cavity</b>         | NCS06/2                  |

**DIMENSIONS**

mm [in]

Cross-sectional view



**ORDERING INFORMATION**

VSB 06-CN - 1 - 00 - V - XXX

**Setting range**

- 1 = 25 - 140 bar [363 - 2031 psi]
- 2 = 70 - 210 bar [1015 - 3046 psi]
- 3 = 105 - 350 bar [1523 - 5076 psi]

**Seals**

- V = Viton
- Omit = Buna-N

**Seal Kit**

- 230000380
- 230000060

**Housing and ports**

- 00 = No Housing
- DG3B = AL, 3/8 BSP
- DG4B = AL, 1/2 BSP
- DG6S = AL, #6 SAE
- DG8S = AL, #8 SAE
- Other housings available

**Housing P/N**

- No Housing
- NCS06/2-DG-3/8
- NCS06/2-DG-1/2
- NCS06/2-DG-6S
- NCS06/2-DG-8S

To order this valve with a specific factory setting, contact your Comatrol representative

RV - Relief Valves Catalog  
VSB 06-CN