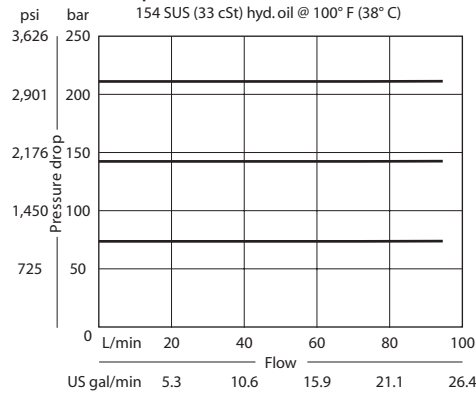


**OPERATION**

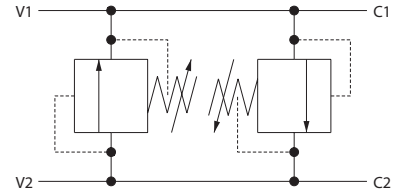
This valve is an inline cross relief. It uses two CP200-1 differential area relief valves.

**SPECIFICATIONS**

**Theoretical performance**



**Schematic**

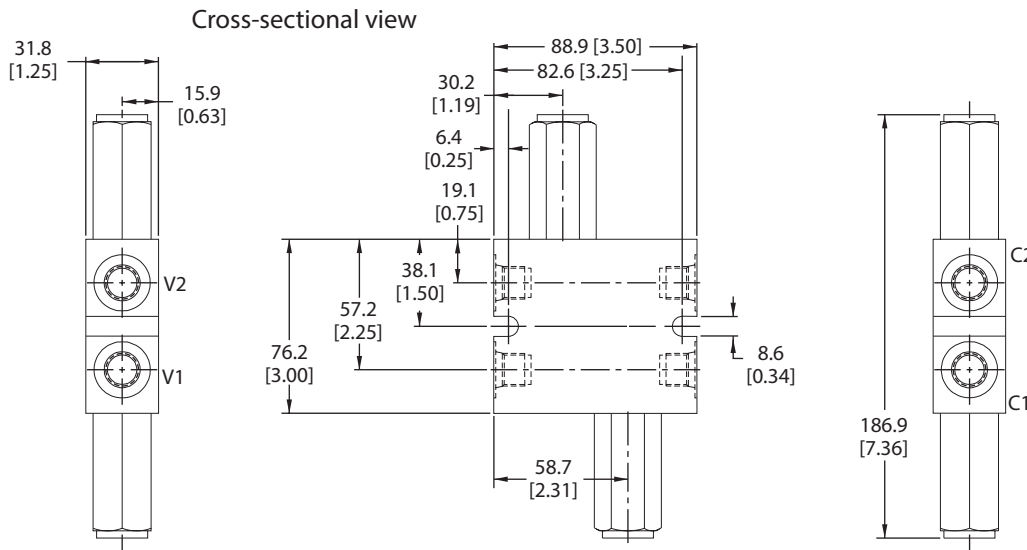


**Specifications**

<b>Rated pressure</b>	250 bar [3600 psi]
<b>Rated flow</b>	75 l/min [20 US gal/min]
<b>Weight</b>	0.82 kg [1.80 lb]
<b>Cavity</b>	none

**DIMENSIONS**

mm [in]



**ORDERING INFORMATION**

**CP220 - 1 - 8S - B - 0 - A - C - 150**

<b>Housing and ports</b>		<b>Housing P/N</b>		<b>Crack pressure</b>	
3B = Al, 3/8 BSP		221743		Code x 10 = psi	
4B = Al, 1/2 BSP		221744		Example: 150 = 1500 psi	
6S = Al, #6 SAE		220216			
8S = Al, #8 SAE		220217			
Other housings available					
<b>Seals</b>		<b>Seal kit</b>		<b>Pressure range</b>	
B = Buna-N		120072		A = 7-55	[100-800]
V = Viton		120161		Standard	28 [400]
<b>Adjustment option</b>				B = 17-138	[250-2000]
A = Internal				Standard	69 [1000]
E = External				C = 41-248	[600-3600]
F = Tamper resistant				Standard	103 [1500]
K = Knob					