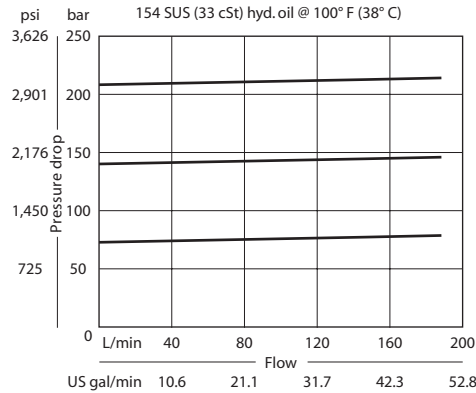


OPERATION

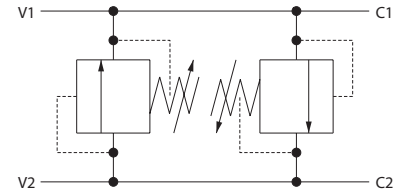
This valve is an inline cross relief. It uses two CP201-1 differential area relief valves.

SPECIFICATIONS

Theoretical performance



Schematic



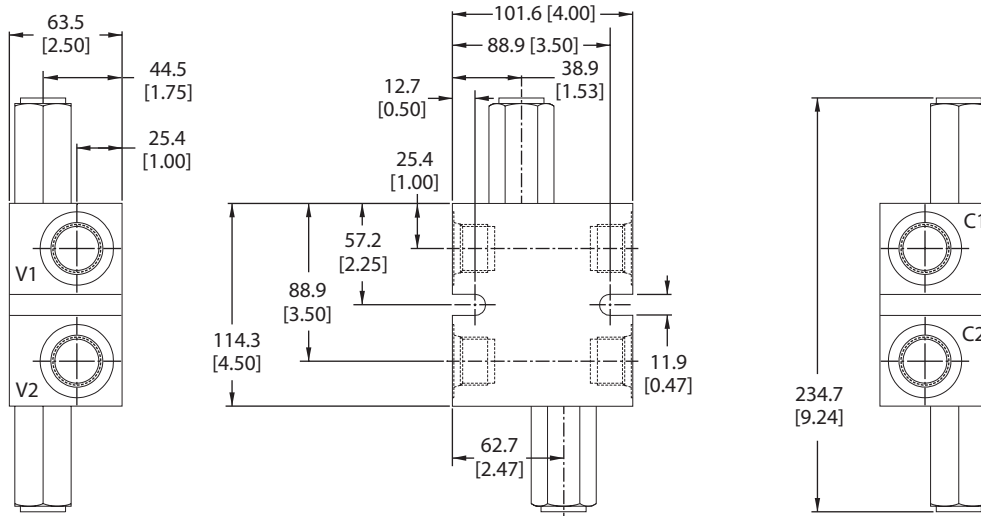
Specifications

Rated pressure	250 bar [3600 psi]
Rated flow	190 l/min [50 US gal/min]
Weight	2.25 kg [4.95 lb]
Cavity	none

DIMENSIONS

mm [in]

Cross-sectional view



ORDERING INFORMATION

CP221-1 - 16S - B - 0 - A - C - 150

Housings & Ports	Housing P/N
6B: 3/4 BSP, AL	221742
8B: 1 BSP, AL	221690
12S: #12 SAE, AL	220223
16S: #16 SAE, AL	220222

Seal Option		
Code	Seal Material	Seal kit
B	Buna	120017
V	Viton	120018

Adjustment Option	
A	Internal
E	External
F	Tamper Resistant
K	Knob

Cracking Pressure

Code x 10 = psi

Example: 150 = 1500 psi

Pressure Range

	bar	[psi]
A =	7-69	[100-1000]
Standard	28	[400]
B =	17-172	[250-2500]
Standard	69	[1000]
C =	41-248	[500-3600]
Standard	103	[1500]