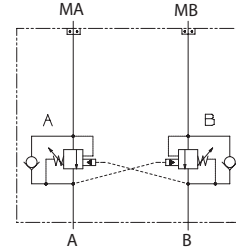


**OPERATION**

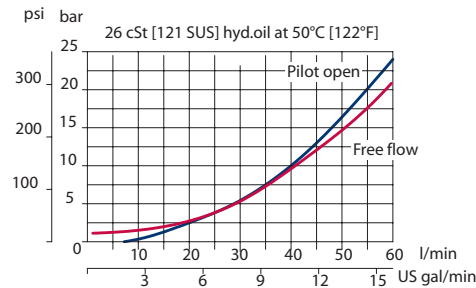
This is a dual counterbalance HIC that mounts to DS motors with manifold mount porting.

**Schematic**



**SPECIFICATIONS**

**Theoretical performance**



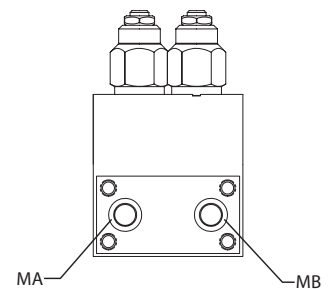
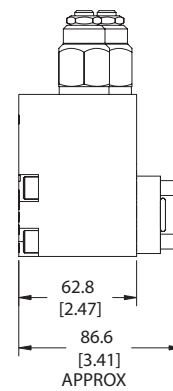
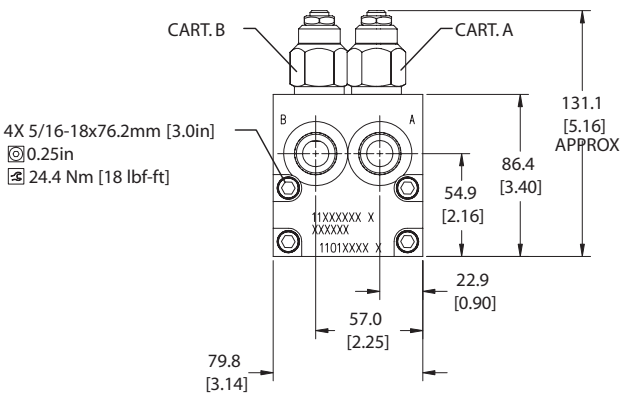
**Specifications**

Rated pressure	210 bar [3045 psi]
Rated flow at 22 bar [319 psi]	60 l/min [16 US gal/min]
Leakage	6 drops/min @ 70% of crack pressure
Weight	1.60 kg [3.53 lb]
Pilot ratio	3.0:1, 4.5:1, 10.0:1
Cartridge	CB10 HV
Service mount kit	11023865
Motor	DS

**DIMENSIONS**

**Cross-sectional view**

mm [in]



- HIC Includes:
- 5/16-18 x3.0" bolts (4X)
  - (-112) O'rings, Viton (12.37x2.62 mm) (4X)
  - Sub-plate

**ORDERING INFORMATION**

**MM-DS-00-DCB10-HV-1-C-1-E-100-B-10S**

Motor mount	Motor code	Secondary valve	Dual counterbalance valve	Type	Pressure range	Pilot ratio	Housing and ports	Part #
		00 = No valve		HV=Hydraulic Vent	For pilot ratio A (3:1)	A = 3:1	10S = Al, #10SAE	11019287
					1 = 35-110 bar [507-1595 psi]	B = 4.5:1	4B = Al, 1/2 BSP	11019288
					2 = 60-150 bar [870-2176 psi]	C = 10:1	Seals	Cartridge seal kit
					3 = 80-230 bar [1160-3336 psi]		B = Buna-N	354001419
					For pilot ratio B (4.5:1)		V = Viton	354001519
					1 = 55-180 bar [797-2611 psi]		Cracking pressure (bar)	
					2 = 75-240 bar [1088-3481 psi]		Example: 100 = 100 bar [1450 psi]	
					3 = 90-350 bar [1305-5076 psi]		See CB10-HV for std. settings	
					For pilot ratio C (10:1)		Adjust type	
					1 = 110-350 bar [1595-5076 psi]		E = External adjustment	
							F = Tamper resistant	
							Check crack pressure	
							1 = 1 bar (14.5 psi)	