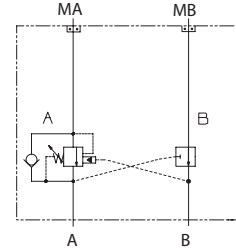


**OPERATION**

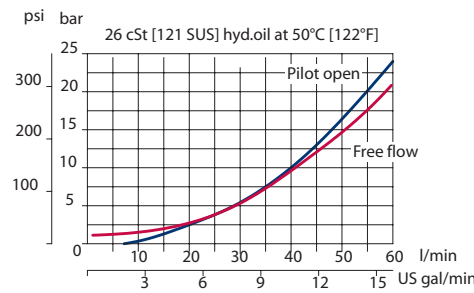
This is a single-counterbalance HIC (A port) that mounts to DS motors with manifold mount porting.

**Schematic**



**SPECIFICATIONS**

**Theoretical performance**



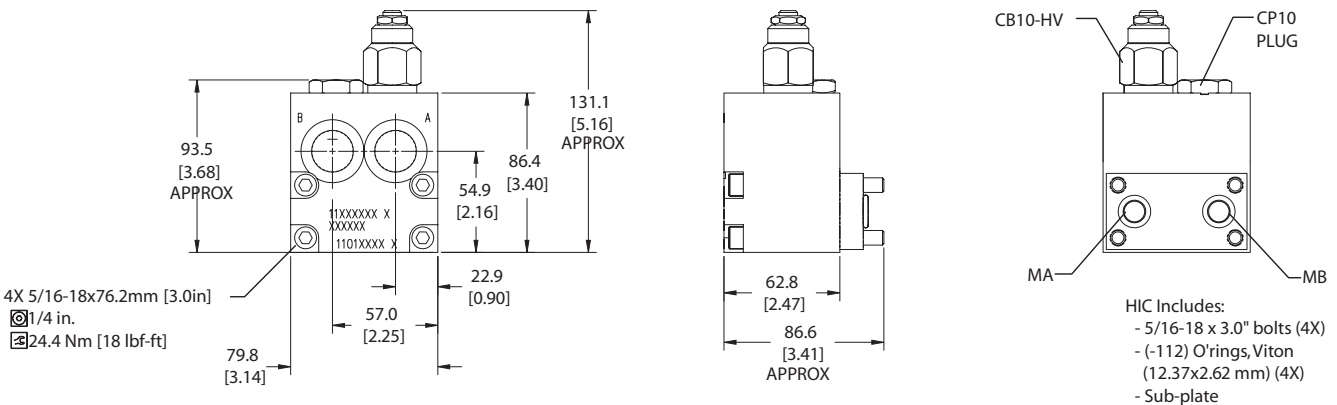
**Specifications**

Rated pressure	210 bar [3045 psi]
Rated flow at 22 bar [319 psi]	60 l/min [16 US gal/min]
Leakage	6 drops/min @ 70% of crack pressure
Weight	1.60 kg [3.53 lb]
Pilot ratio	3.0:1, 4.5:1, 10.0:1
Cartridge	CB10 HV
Plug	SDC10-V-3S-B1
Service mount kit	11023865
Motor	DS

**DIMENSIONS**

Cross-sectional view

mm [in]



**ORDERING INFORMATION**

