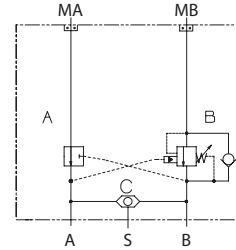


OPERATION

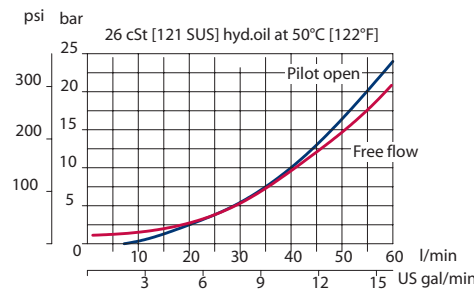
This is a single counterbalance (B port) HIC with shuttle that mounts to DS motors with manifold mount porting.

Schematic



SPECIFICATIONS

Theoretical performance



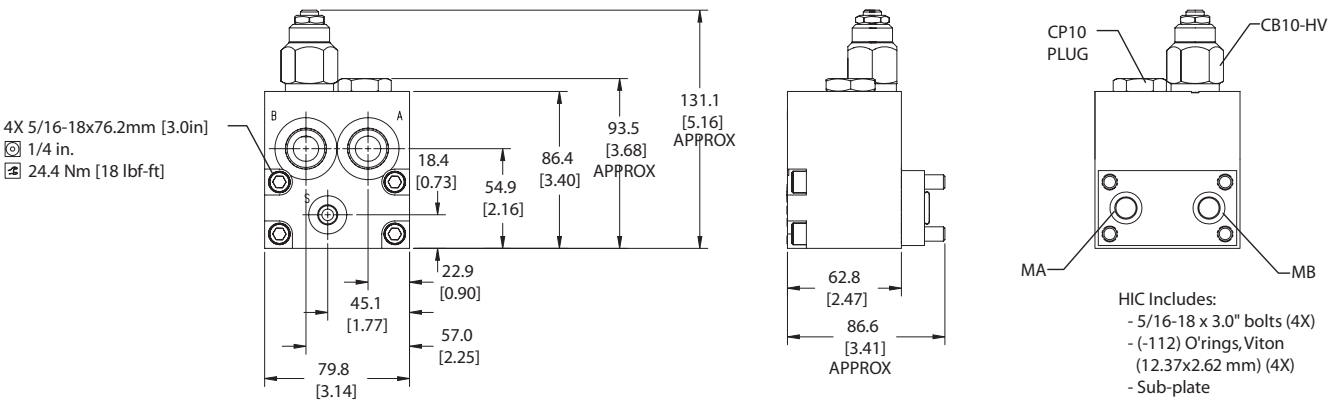
Specifications

Rated pressure	210 bar [3045 psi]
Rated flow at 22 bar [319 psi]	60 l/min [16 US gal/min]
Leakage	6 drops/min @ 70% of crack pressure
Weight	1.60 kg [3.53 lb]
Pilot ratio	3.0:1, 4.5:1, 10.0:1
Cartridge	CB10 HV
Shuttle	CP124-1
Plug	SDC10-V-3S-B1
Shuttle/drain port	#4 SAE (1/8 BSP)
Service mount kit	11023865
Motor	DS

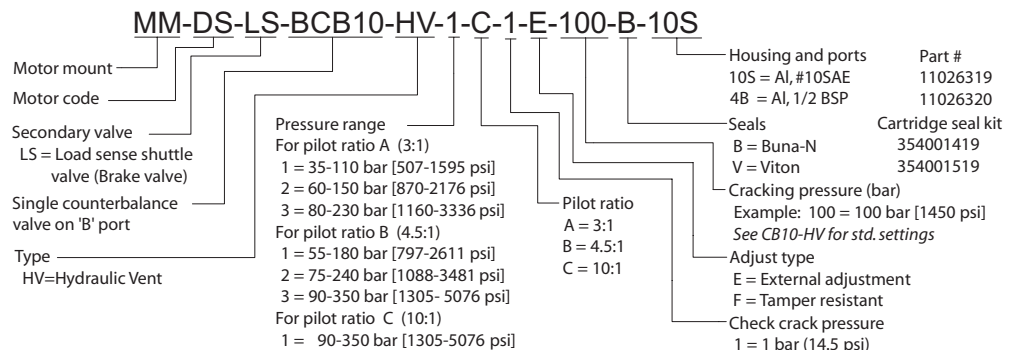
DIMENSIONS

Cross-sectional view

mm [in]



ORDERING INFORMATION



MM - Motor Mount HICs Catalog
 MM-DS-LS-BCB10-HV