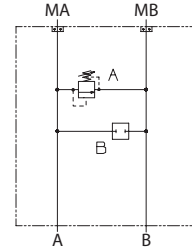


OPERATION

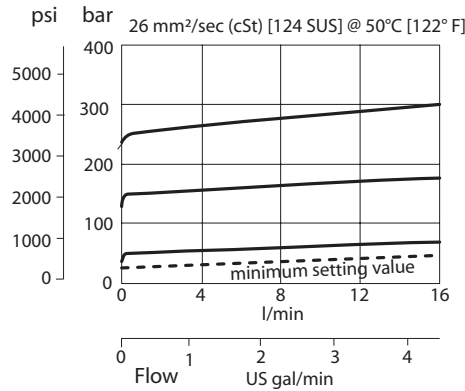
This is a single cross-port relief (A to B) HIC that mounts to DH motors with manifold mount porting.

Schematic



SPECIFICATIONS

Theoretical performance



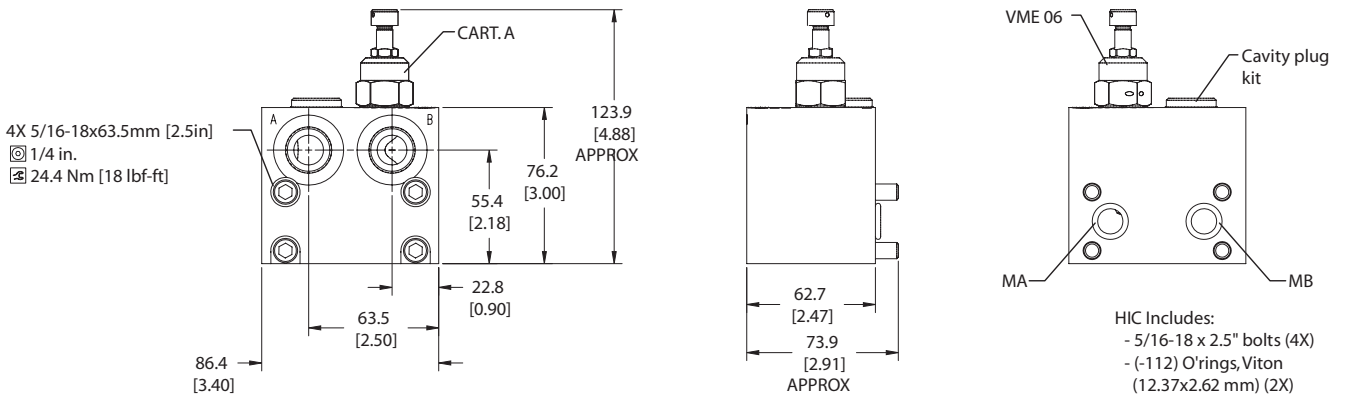
Specifications

Rated pressure	210 bar [3045 psi]
Rated flow at 7 bar [102 psi]	40 l/min [11 US gal/min]
Weight	1.28 kg [2.82 lb]
Cartridge	VME 06
Plug	11023862
Service mount kit	11026074
Motor	DH

DIMENSIONS

Cross-sectional view

mm [in]



MM - Motor Mount HICs Catalog
 MM-DH-00-AVME06

ORDERING INFORMATION

MM-DH-00-AVME06-EN-2-10S-B-100

