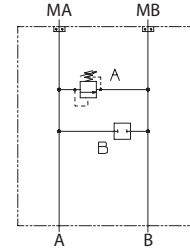


OPERATION

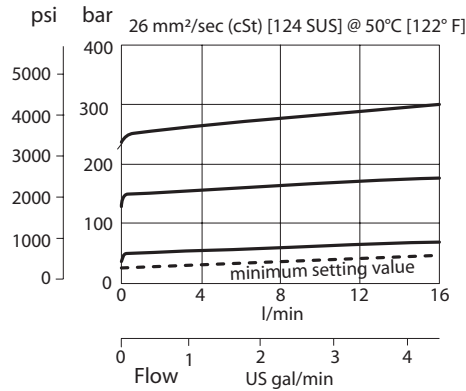
This is a single cross-port relief (A to B) HIC that mounts to DS motors with manifold mount porting.

Schematic



SPECIFICATIONS

Theoretical performance

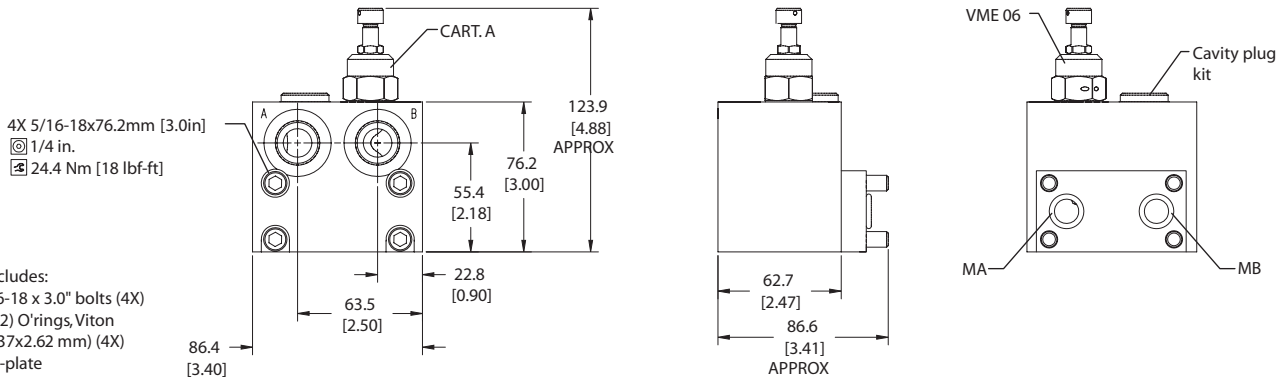


Specifications

Rated pressure	210 bar [3045 psi]
Rated flow at 7 bar [102 psi]	40 l/min [11 US gal/min]
Weight	1.39 kg [3.06 lb]
Cartridge	VME 06
Plug	11026074
Service mount kit	11023865
Motor	DS

DIMENSIONS

Cross-sectional view mm [in]



- HIC Includes:
- 5/16-18 x 3.0" bolts (4X)
 - (-112) O'rings,Viton (12.37x2.62 mm) (4X)
 - Sub-plate

ORDERING INFORMATION

MM-DS-00-AVME06-EN-2-10S-B-100

