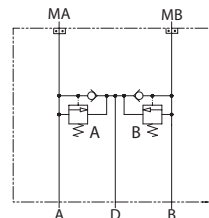


**OPERATION**

This is a dual shock valve with anticavitation checks that mounts to OMH motors with BSP porting. The PVLP shock valve absorbs short-duration pressure spikes. Do not use it as a full-flow pressure relief valve. For anticavitation protection, connect drain port to reservoir with adequate piping.

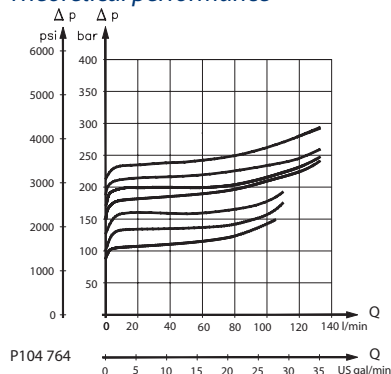
*Schematic*



P104 763

**SPECIFICATIONS**

*Theoretical performance*



P104 764

*Specifications*

Rated pressure	345 bar [5003 psi]
Rated flow at 7 bar [102 psi]	57 l/min [15 US gal/min]
Crack pressure	0.5 bar [7 psi]
Leakage	5 cm <sup>3</sup> /min [0.3 in <sup>3</sup> /min] @ at 207 bar [3000 psi]
Weight	2.12 kg [4.67 lb]
Shuttle/drain port	#4 SAE (1/4 BSP)
Service mount kit	11023162
Motor	OMH

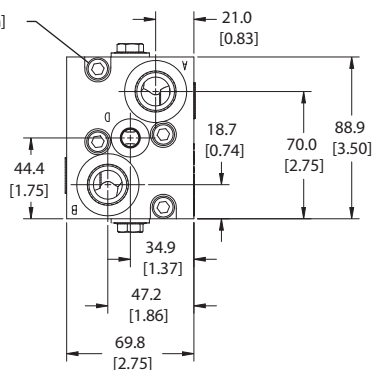
Motor mount HICs  
 MM-OMH-00-DPVLP

**DIMENSIONS**

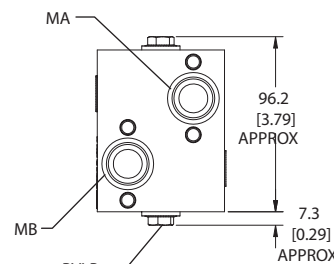
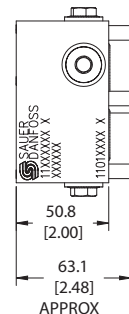
*Cross-sectional view*

mm [in]

- 4X M8x1.25x50mm [1.97in]
- ⊙6mm
- ⊠40 N·m [30 lbf·ft]



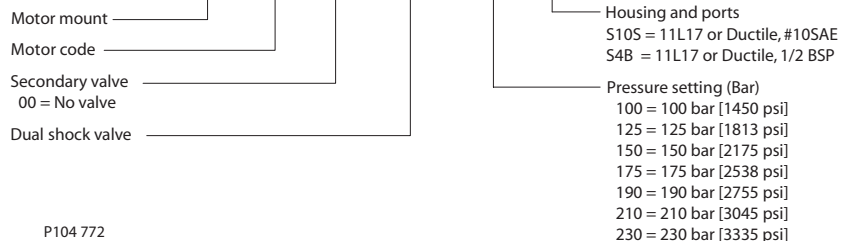
P104 771



- HIC Includes:
- M8x50mm bolts (4X)
  - (-119) O'rings, Viton (23.47x2.62 mm) (2X)

**ORDERING INFORMATION**

**MM-OMH-00-DPVLP-175-S4B**



Part #  
 11026360  
 11026361

P104 772