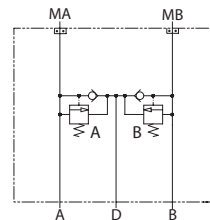


OPERATION

This is a dual shock valve with anticavitation checks that mounts to OMS motors with BSP porting. The PVLP shock valve absorbs short-duration pressure spikes. Do not use it as a full-flow pressure relief valve. For anticavitation protection, connect drain port to reservoir with adequate piping.

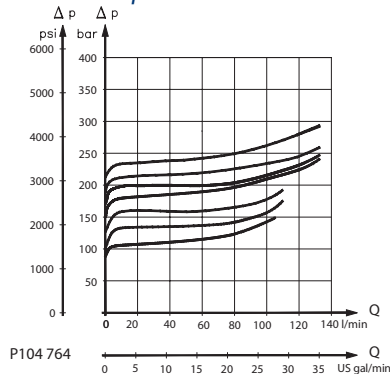
Schematic



P104 763

SPECIFICATIONS

Theoretical performance



P104 764

Specifications

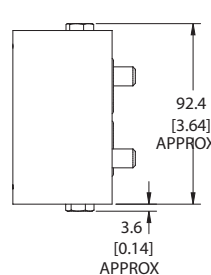
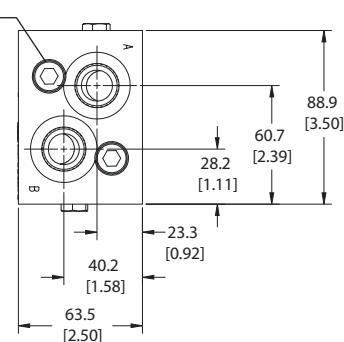
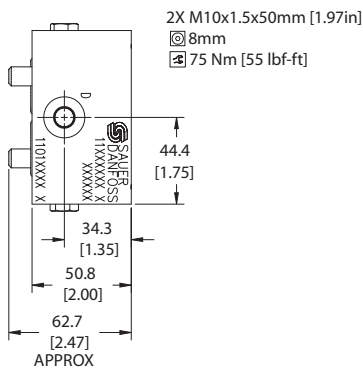
Rated pressure	345 bar [5003 psi]
Rated flow at 7 bar [102 psi]	57 l/min [15 US gal/min]
Crack pressure	0.5 bar [7 psi]
Leakage	5 cm ³ /min [0.3 in ³ /min] @ at 207 bar [3000 psi]
Weight	2.02 kg [4.45 lb]
Shuttle/drain port	#4 SAE (1/4 BSP)
Service mount kit	11023866
Motor	OMS

Motor mount HICs
MM-OMS-00-DPVLP

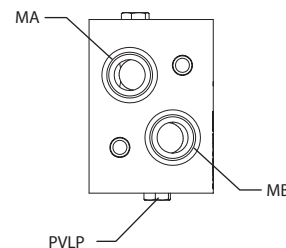
DIMENSIONS

Cross-sectional view

mm [in]



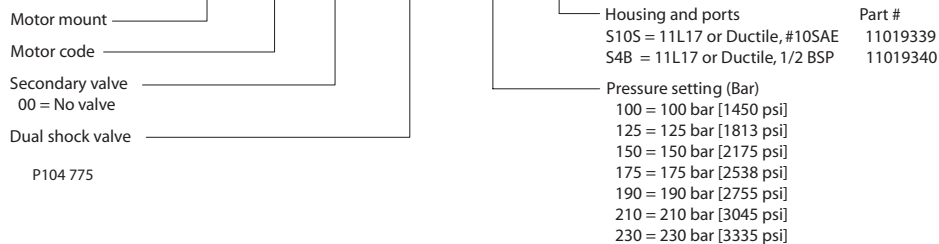
P104 774



HIC includes:
- M10x50mm bolts (2X)
- (-119) O-rings, Viton (23.47x2.62 mm) (2X)

ORDERING INFORMATION

MM-OMS-00-DPVLP-175-S10S



P104 775