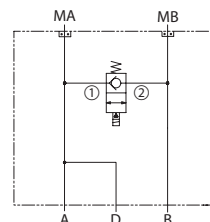


OPERATION

This is a bypass solenoid HIC with drain that mounts to DH motors with manifold mount porting. When energized, the valve connects ports A and B. Drain connects to port A.

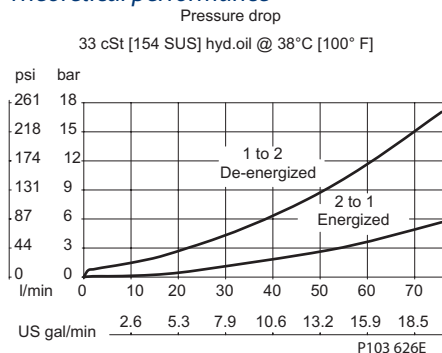
Schematic



P104 750

SPECIFICATIONS

Theoretical performance



Specifications

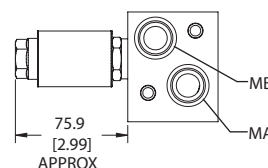
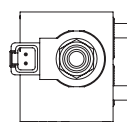
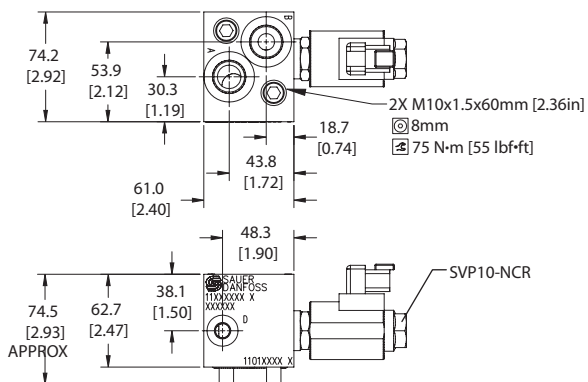
Rated pressure	210 bar [3045 psi]
Rated flow at 7 bar [102 psi]	80 l/min [21 US gal/min]
Leakage	6 drops/min @ at rated pressure
Weight	1.03 kg [2.27 lb]
Cartridge	SVP10-NCR
Shuttle/drain port	#4 SAE (1/4 BSP)
Service mount kit	11023867
Motor	OMS

Motor mount HICs
MM-OMS-00-SVP10-NCR

DIMENSIONS

Cross-sectional view

mm [in]

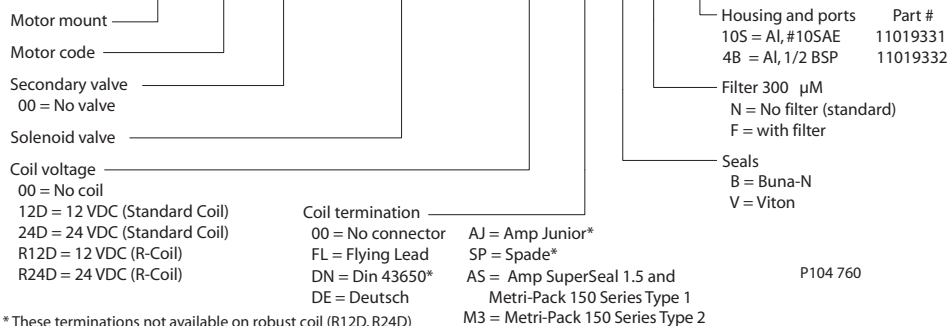


P104 759

HIC Includes:
- M10x60mm bolts (2X)
- (-119) O'rings, Viton
(23.47x2.62 mm) (2X)

ORDERING INFORMATION

MM-OMS-00-BSVP10-NCR-12D-DE-B-N-10S



P104 760