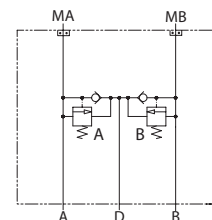


OPERATION

This is a dual shock valve with anticavitation checks that mounts to OMT motors with BSP porting. The PVLP shock valve absorbs short-duration pressure spikes. Do not use it as a full-flow pressure relief valve. For anticavitation protection, connect drain port to reservoir with adequate piping.

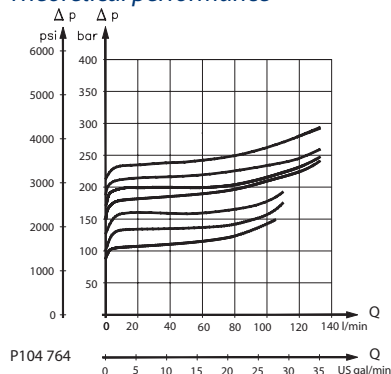
Schematic



P104 763

SPECIFICATIONS

Theoretical performance



P104 764

Specifications

Rated pressure	345 bar [5003 psi]
Rated flow at 7 bar [102 psi]	57 l/min [15 US gal/min]
Crack pressure	0.5 bar [7 psi]
Leakage	5 cm ³ /min [0.3 in ³ /min] @ 207 bar [3000 psi]
Weight	2.94 kg [6.48 lb]
Shuttle/drain port	#6 SAE (1/4 BSP)
Service mount kit	11023870
Motor	OMT

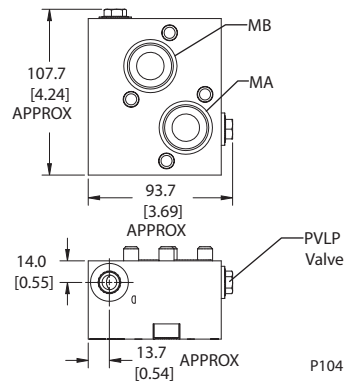
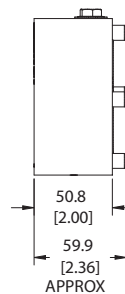
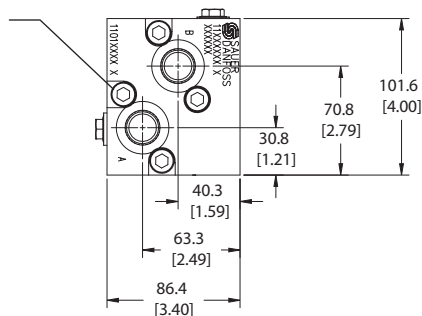
Motor mount HICs
 MM-OMT-00-DPVLP

DIMENSIONS

Cross-sectional view

mm [in]

- 4X M10x1.5x50mm [1.97in]
- 8mm
- 75 N·m [55 lbf·ft]



P104 776

- HIC Includes:
- M10x50mm bolts (4X)
 - (-123) O'rings, Viton (29.82x2.62 mm) (2X)

ORDERING INFORMATION

MM-OMT-00-DPVLP-175-S10S

- Motor mount
- Motor code
- Secondary valve
00 = No valve
- Dual shock valve
- Housing and ports
S10S = 11L17 or Ductile, #10SAE
S4B = 11L17 or Ductile, 1/2 BSP
- Pressure setting (Bar)
100 = 100 bar [1450 psi]
125 = 125 bar [1813 psi]
150 = 150 bar [2175 psi]
175 = 175 bar [2538 psi]
190 = 190 bar [2755 psi]
210 = 210 bar [3045 psi]
230 = 230 bar [3335 psi]

Part #
11026364
11026365

P104 777